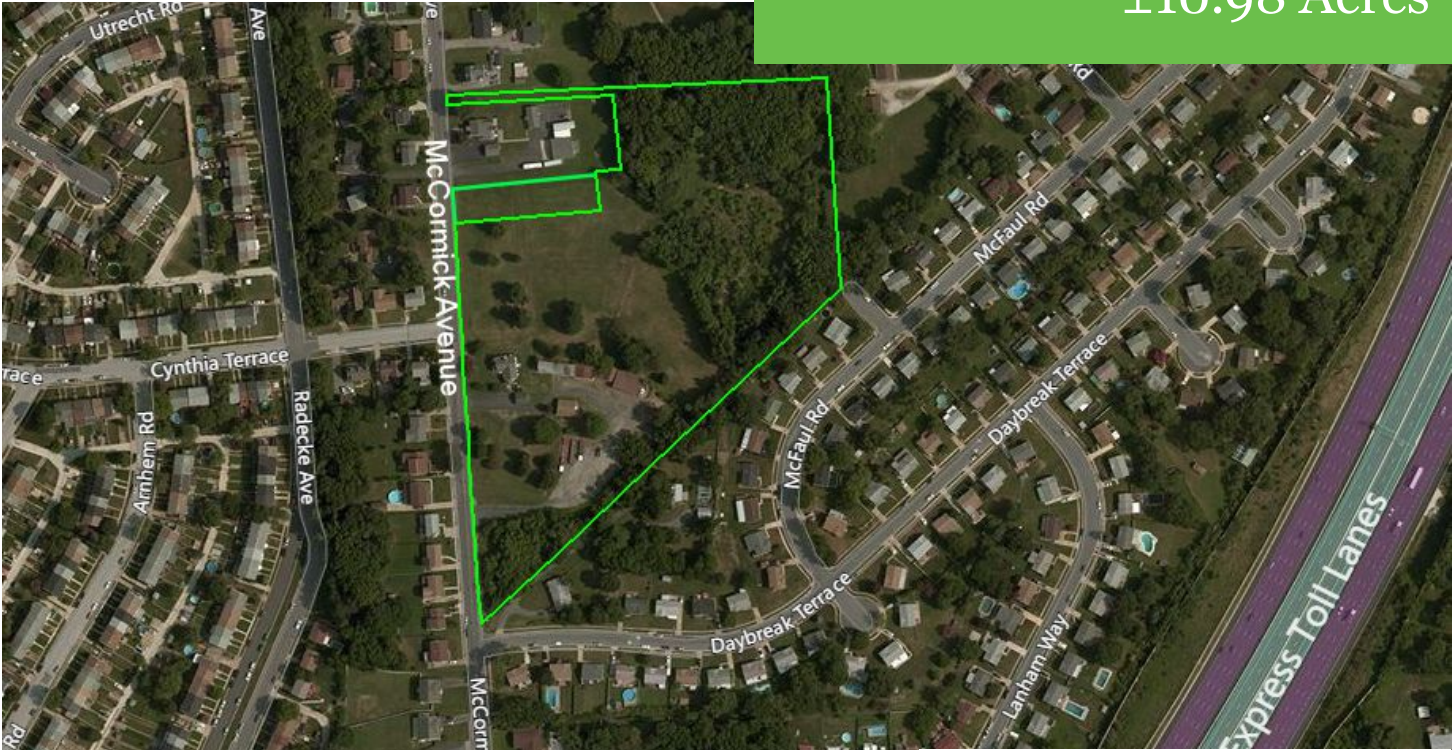


FOR SALE  
House of Worship Site  
±10.98 Acres



**5501 McCormick Avenue**  
Overlea, Baltimore County, Maryland 21206

Property Features:

- Rare opportunity to build a house of worship in an established community.
- Ideally-sized to support a church with parking, this land comprises two parcels totaling almost 11 acres.
- Zoning permits a church by right.
- Includes a 2,277-square foot brick home, which could easily function as a parsonage, or be used for offices/classrooms.
- Easy access to I-95, I-695, Rte 40, and Rte 1.



Offered at  
\$1,200,000

**CONTACT AGENTS**

**Stephen Ferrandi**  
410.925.4566  
Stephen@MarylandLand.com

**Matthew Shultis**  
301.360.4430  
Matthew@MarylandLand.com

MARYLAND LAND ADVISORS  
5771 Waterloo Road, Ellicott City, MD 21043  
866.910.LAND | MarylandLand.com

While we have no reason to doubt the accuracy of any information supplied herein, we cannot and do not guarantee its accuracy. All information should be independently verified. We are not responsible for errors, omissions, misuse, or misinterpretation of the information, and we make no warranty of any kind as to the property or any other matters. Copyright © 2018 EA Realty, LLC.