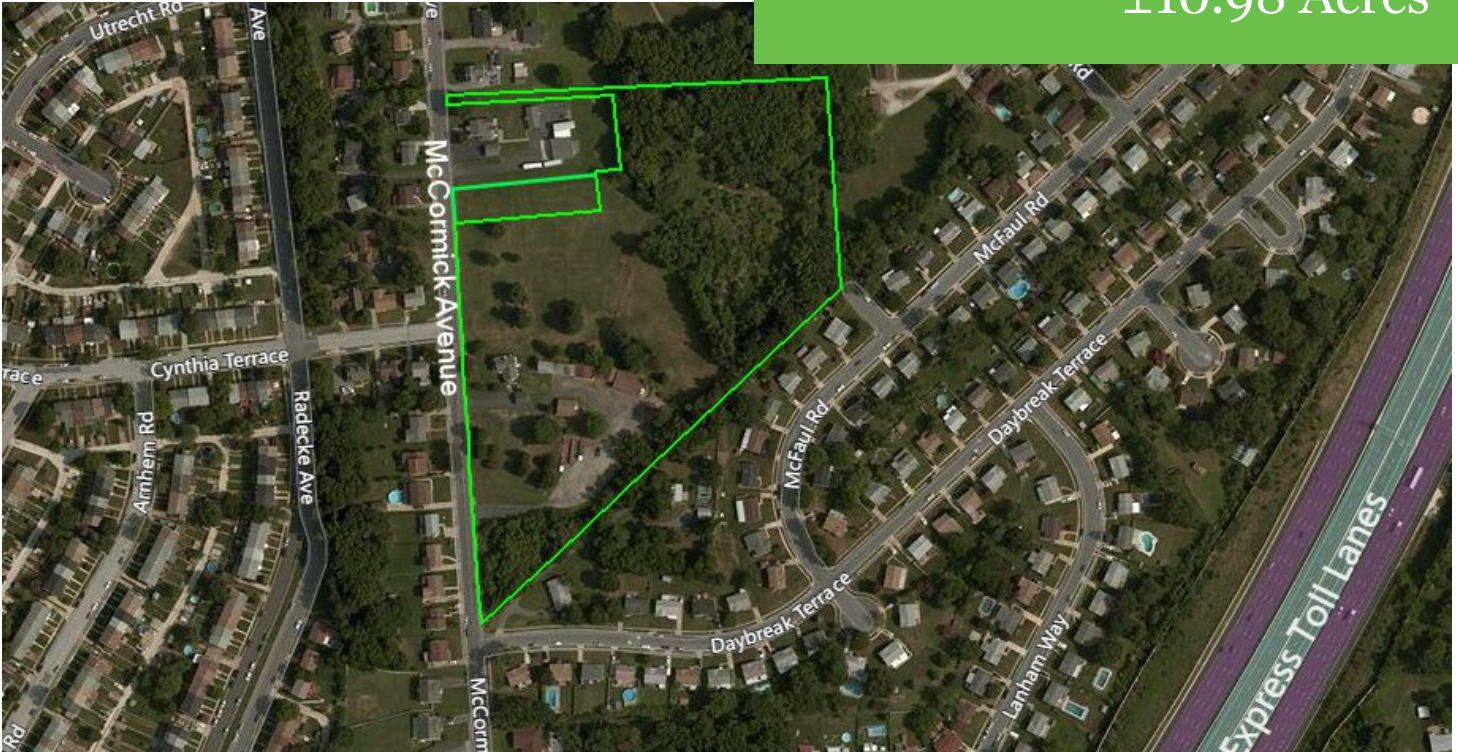


FOR SALE  
House of Worship Site  
±10.98 Acres



## 5501 McCormick Avenue

Overlea, Baltimore County, Maryland 21206

### Property Features:

- Rare opportunity to build a house of worship in an established community.
- Ideally-sized to support a church with parking, this land comprises two parcels totaling almost 11 acres.
- Zoning permits a church by right.
- Includes a 2,277-square foot brick home, which could easily function as a parsonage, or be used for offices/classrooms.
- Easy access to I-95, I-695, Rte 40, and Rte 1.



Offered at  
\$1,200,000  
**\$899,000**

### CONTACT AGENT

**Stephen Ferrandi**  
410.925.4566  
Stephen@MarylandLand.com

### MARYLAND LAND ADVISORS

5771 Waterloo Road, Ellicott City, MD 21043  
866.910.LAND | MarylandLand.com